

Peaches 'n PHRF - 2024 **SAILING INSTRUCTIONS**



1. RULES

- 1.1 All races will be governed by current Sail Canada/ ISAF Racing Rules of Sailing (International Sailing Federation) (ISAF), the prescriptions of the CYA, the rules of each class concerned and by these sailing instructions

2. ENTRIES

- 2.1 In order to participate in the Peaches 'n PHRF regatta, you must have paid the registration fees and hold a valid PHRF-LO certificate. Failure to comply with these requirements will result in being scored DNC (Did Not Compete) in any race/series sailed when these conditions are not met.

3. NOTICES TO COMPETITORS

- 3.1 All notices to competitors will be posted on the online PnP Notice Board at www.fiftypointsailingclub.com prior to 9:00 am EST on August 24, 2024.
- 3.2 Communication during racing will use **VHF channel 69** and will be monitored by the Race Committee approximately 1 hour before race and during the race.

4. CHANGES IN SAILING INSTRUCTIONS

- 4.1 Any changes in the sailing instructions shall be made by:
 - 4.1.1 Skipper's meeting held approximately 90 minutes (9:30 am) prior to racing.
 - 4.1.2 Communicating verbally to each yacht on the water before the warning signal in accordance with the following procedure:
 - Committee boat will display code flag 'L'.
 - All yachts will come within hail of the committee boat to receive instruction.
 - After instruction changes have been communicated to all competitors, code flag 'L' will be lowered.

5. SIGNALS MADE ASHORE OR ON THE WATER

- 5.1 Signals made ashore will be displayed on the committee boat.
- 5.2 Code flag 'N' accompanied by three (3) sound signals means that the race has been abandoned and will not be re-sailed
- 5.3 One (1) audible signal while the committee boat is still in harbor indicates that the race committee is heading out to the course.
- 5.4 One (1) audible signal when the committee boat returns to harbor signals 'protest time has begun'.

6. SCHEDULE OF RACES

- 6.1 Races will commence at **11:00 am EDT on Saturday, August 24, 2024.**
- 6.2 A **maximum of three (3)** races will be sailed during the Regatta.
- 6.3 In the event of a delayed start, the 'postponement' flag will be flown by the Race Committee on the course.
- 6.4 No races will be started after 3:30 pm EDT.

7. THE COURSE

- 7.1 The fixed mark race course is **located approximately 1.5 nm NW of Fifty Point on a 307°M heading.**
- 7.2 The course will be displayed on the stern committee boat and/or relayed via VHF to the participants.
- 7.3 Long distance courses will be relayed to the participants via VHF and may include fixed marks within the race course or other local marks (denoted in Appendix B).
- 7.3 **The Start/Finish Line is out of bounds except when starting or finishing. Boats passing through this area when not starting or finishing will be scored DSQ.**

8. MARKS

- 8.1 The course marks are plastic pipes approximately 6" in diameter and 6' tall. **Marks are numbered 1 through 8.** The RC boat and the central fixed pipe mark, denoted with 'C', to the port will form the start line, and an Orange floating mark to the Starboard will denote the finish line.
- 8.2 All mark rounding's will be to port.
- 8.3 If a mark of the course is missing, a temporary mark will be placed in the approximate location of the missing mark. This change will be communicated according to Section 4 of the sailing instructions.

9. THE START

- 9.1 See Appendix B for start sequence and classes. Starts are rolling.
- 9.2 The start line will be between the port flag on the committee boat and the white start mark marked 'C'. The starting area is defined as the area surrounding the start line that extends three (3) boat lengths beyond the port and starboard ends of the line as well as three (3) boat lengths above and below the start line. All yachts whose preparatory signal has not been made shall keep clear of the starting area and of all yachts whose preparatory signal has been made.

10. RECALLS

- 10.1 Individual recalls will be signaled in accordance with CYA 29.2.
- 10.2 General recall will be signaled in accordance with CYA 29.3. A general recall will restart the recalled fleet after the last numerical fleet start.

11. CHANGE OF COURSE AFTER THE START

- 11.1 The race committee may elect to shorten or lengthen the course during the course of a race.
- 11.2 Shorten course will be signaled by 2 horn blasts and flying of code flag "S"
- 11.3 Lengthen course will be signaled by 4 horn blasts and the flying of fleet flag of the appropriate fleet or fleets. Lengthen course will be one more complete lap of the course for the fleets designated.
- 11.4 The change will be signaled before the leading yacht has begun the leg.

12. THE FINISH

- 12.1 The finish line will be between the 'on station' Orange flag on the RC boat and the orange mark, to the Starboard side of the Committee Boat. The finish line is to be crossed in the direction from the previous mark.

13. TIME LIMITS

- 13.1 The first mark must be rounded within forty five (45) minutes of starting. If no yacht has rounded the first mark within this time period, then the race will be abandoned and will not be re-sailed.
- 13.2 The time limit for finishing a started race will be two hours and thirty minutes elapsed time after the start of the fleet. Any yacht finishing after two hours and thirty minutes elapsed time will be scored DNF.
- 13.4 No races will be started after 3:30 pm EST.

14. PROTESTS

- 14.1 Protests must be submitted on a CYA Protest Form within one (1) hour of the committee boat returning to harbor. On her return to harbor, the committee boat will make one (1) audible signal to indicate the beginning of the time period within which a protest may be lodged. Protest forms are available from the race committee.
- 14.2 All protests should be presented to the race chairman who, in turn, will take them to the protest committee.

- 14.3 The jury will hear protests on the same day/evening they are received and will rule on the outcome within 90 minutes of the final hearings.

15. SCORING

- 15.1 Yacht finish times will be handicapped using the PHRF-LO time-on-time scoring system.
- 15.2 All races in which a yacht competes shall be scored.
- 15.3 Low point scoring system will be used.
 - 15.3.1 DNF will be scored as fleet + 1
 - 15.3.2 DNS will be scored as fleet + 2
 - 15.3.3 DSQ will be scored as fleet + 2.
- 15.4 Ties will be broken as per CYA Appendix A8

16. ALTERNATIVE PENALTIES

- 16.1 The 720° turns penalty, CYA rule 44.2, will apply.

17. FLEETS

- 17.1 Fleets, and Fleet Splits will be posted at the Skippers meeting

Exact fleet splits will be decided prior to the event and posted on the Online Notice Board on www.fiftypointsailingclub.com
- 17.2 Each skipper will declare his/her yacht as 'flying sails' or 'non-flying sails' for each of the series of races. He/she will maintain that designation until the Regatta is completed. Yachts wishing to change fleets must make their intentions known at least 2 hours prior to the first race.
- 17.3 A minimum of three (3) yachts is required to constitute a fleet, unless otherwise noted.

18. MEASUREMENTS AND HANDICAP RATING

- 18.1 Any yacht with unmeasured sails, which could affect its PHRF - LO rating shall have its sails measured.
- 18.2 The race committee reserves the right to inspect any member's yacht to verify its rating and compliance with club rules.
- 18.3 Measurement and handicap rating will be as per the current PHRF-LO handicapper's manual and by-laws.
- 18.4 Handicap grievances will be resolved in accordance with PHRF-LO by-laws.

Appendix A – Course Diagram

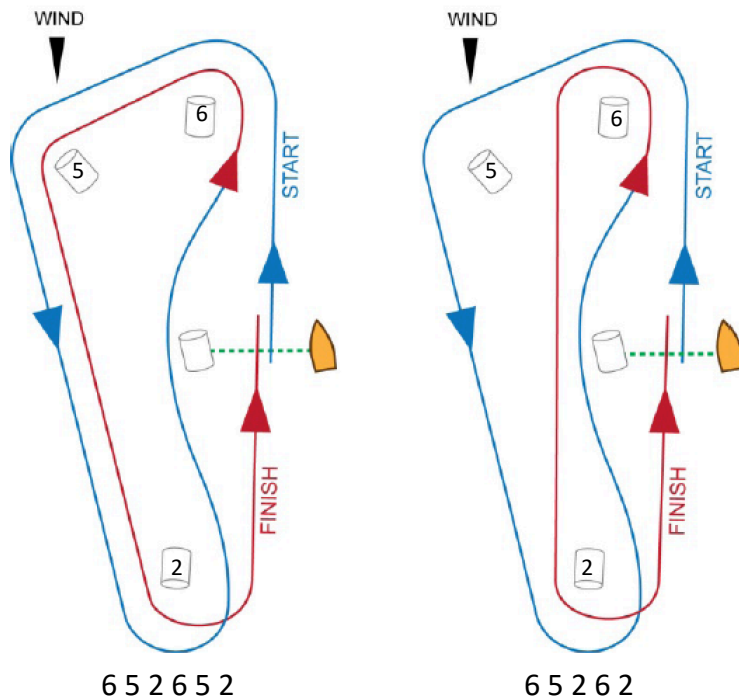
Courses will be provided by the RC as a list of permanent marks required to round. Eg, 6 5 2 6 5 2 or 6 5 2 6 2. Following the last mark rounding, boats must proceed to the finish line.

All roundings must be done to Port.

Approximate GPS mark locations are provided in Appendix B.

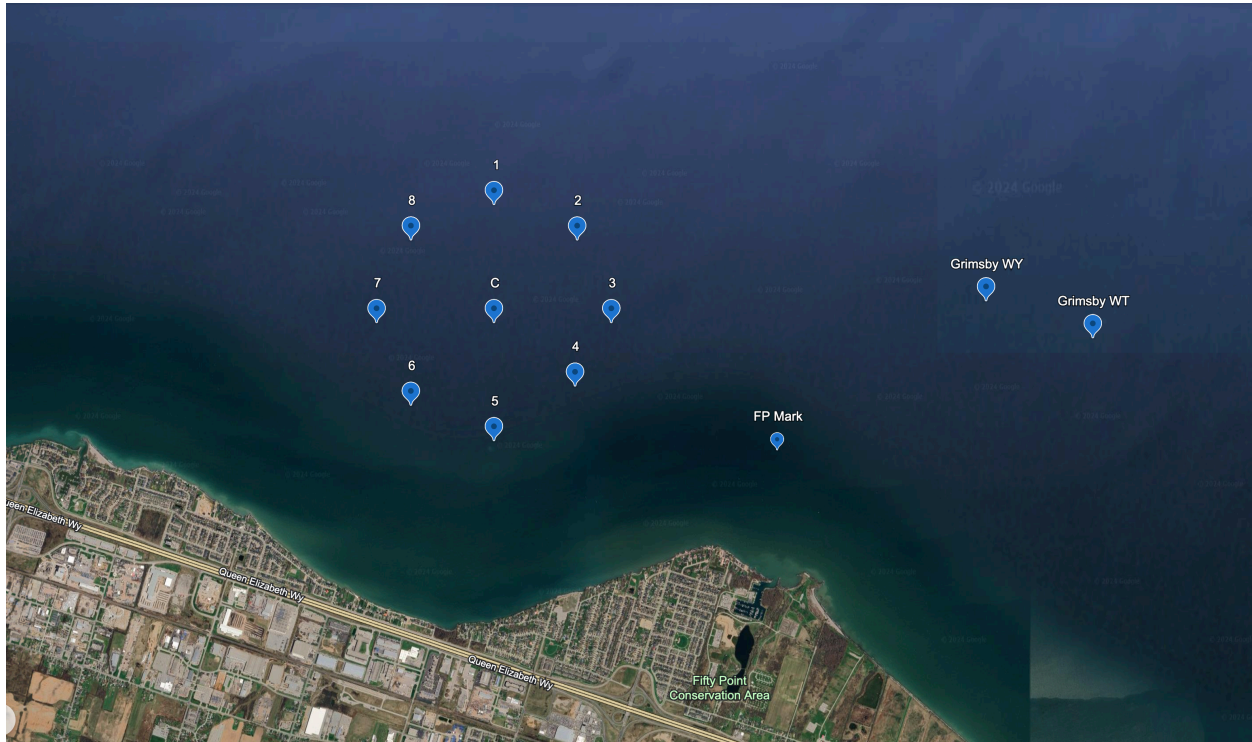
The Start/Finish line is Out of Bounds except when starting or finishing. Boats are to remain clear of this line otherwise.

Examples of 2 possible race courses. **Note, other options are possible.**



Appendix B – Mark Locations

Figure 1.b – Approximate GPS coordinates for the fixed mark locations.



Mark	DD MM.MMM	
Centre	43°14.65' N	79°39.000' W
Mark 1	43°15.15' N	79°39.000' W
Mark 2	43°15.00' N	79°38.515' W
Mark 3	43°14.65' N	79°38.316' W
Mark 4	43°14.30' N	79°38.515' W
Mark 5	43°14.15' N	79°39.000' W
Mark 6	43°14.30' N	79°39.484' W
Mark 7	43°14.65' N	79°39.684' W
Mark 8	43°15.00' N	79°39.484' W
Grimsby Small Arms Outer Mark WY	43°14.742' N	79°36.133' W
Grimsby Small Arms Outer Mark WT	43°14.484' N	79°35.490' W
Fifty Point Entrance Marker (FP Mark)	43°14.100' N	79°37.350' W

Appendix C – Start Signals

Time	Flag Signal	Sound Signal	Significance
5 min	Number 1 up	1 horn	5 min to start
4 min	“P” flag up	1 horn	Preparatory, 4 min
1 min	“P” flag down	1 horn	1 min to 1 st start
0 min	Number 1 down	1 horn	START of 1 st fleet
5 min	Number 2 up		5 min to start
4 min	“P” flag up	1 horn	Preparatory, 4 min
1 min	“P” flag down	1 horn	1 min to 2 nd start
0 min	Number 2 down	1 horn	START of 2 nd fleet

Subsequent starts for fleets to follow same procedure.